

# Catalog

Introduction .....	2
Features .....	2
Product Requirements .....	3
Smart Wi-Fi Plug Mini .....	3
Smart Wi-Fi Plug Mini Installation .....	4
Using MiaoHome APP with smart Wi-Fi plug mini .....	5
MiaoHome Account .....	5
How to reset the smart plug? .....	6
MiaoHome Setting .....	7
Customize smart plug name .....	7
Timer .....	8
Countdown .....	9
Scene Settings .....	10
Frequently Asked Questions .....	11
Usage Tips .....	12
Support .....	12
Specifications .....	13
Limited Warranty .....	14

# MOKO Wi-Fi Smart plug Mini

## Introduction

MOKO Smart Wi-Fi Plug Mini is a smart home device that turns your typical electrical device into a smart, controllable, and multi-functional device, enabling you to easily control your lights and household electronic devices via MOKO MiaoHome mobile app on your iOS or Android devices, no matter where you are.

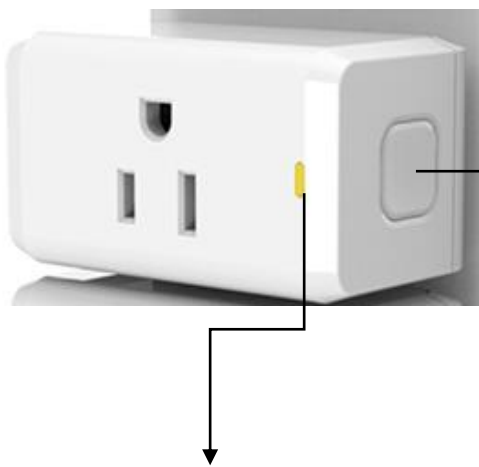
## Features

1. Control the plugged-in devices whenever/wherever you are by MiaoHome APP, if the smart plug and your control device connected to the Internet.
2. Countdown and timer functions turn your home appliance into a smart device
3. Control the light turn on and turn off the home to stop potential intruders in the field.
4. Compatible with Amazon Alexa (sold separately), You can control your device via your voice.

## Product Requirements

- Android 4.1 or higher, iOS 8 or higher
- A Wi-Fi connection (supports IEEE 802.11b/g/n).

## Smart Wi-Fi Plug Mini



- **Press to turn the socket ON or OFF**
- **Press and hold (for 10 seconds) until the LED flashes yellow rapidly to reset the Smart Plug Mini.**

**Flashing blue rapidly:** After the configuration is successful, the specified WiFi router is being connected

**Solid blue:** Smart socket has connected to the WiFi router. The Smart Plug Mini is switched ON.

**Flashing yellow rapidly:** Factory reset. Phone can connect it with MiaoHome APP

**Off:** The Smart Plug Mini is powered OFF.

**\* Image may differ from actual product due to different regional power specifications. We use the U.S. version as an example**

## Smart Wi-Fi Plug Mini Installation

**1. Download **MiaoHome** from App Store or**

**Google**



**OR scan**



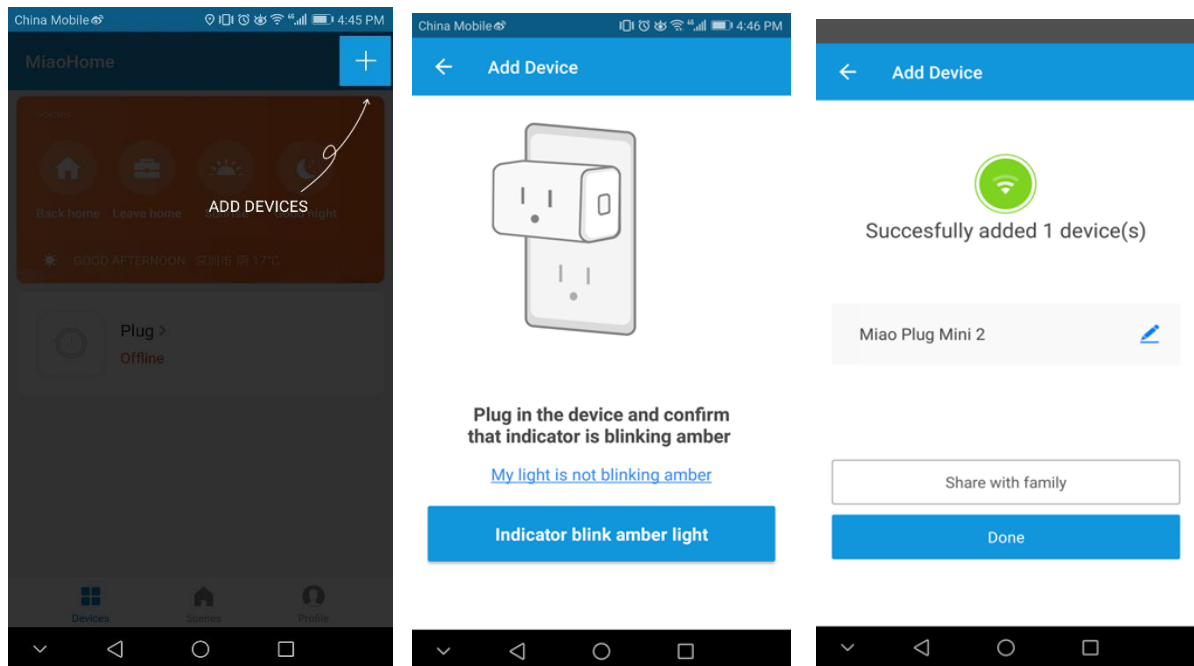
**QR code**

**2. Connect mobile device to your **2.4 GHz Wi-Fi** network.**

Note: The Smart Plug Mini only supports 2.4 GHz Networks.



### 3. Launch **MiaoHome** and follow the in-app instructions to connect the **Smart Plug Mini** to your network.



## Using MiaoHome APP with smart Wi-Fi plug mini

### MiaoHome Account

A MiaoHome account can provide some functions below:

- control and configure the devices from outside your home.
- Can access Amazon Echo/Alexa.
- Can define your smart socket with “Scenarios Function” for a truly automated experience
- Can set and configure all smart plugs simultaneously

One smart plug can only be associated with one MiaoHome account, But can be shared to another people.

## How to reset the smart plug?

Resetting the Smart Wi-Fi Plug Mini can help you troubleshoot any issues that you may have. Please keep in mind that factory resetting a device will erase all of your custom settings and restore them to factory default settings.

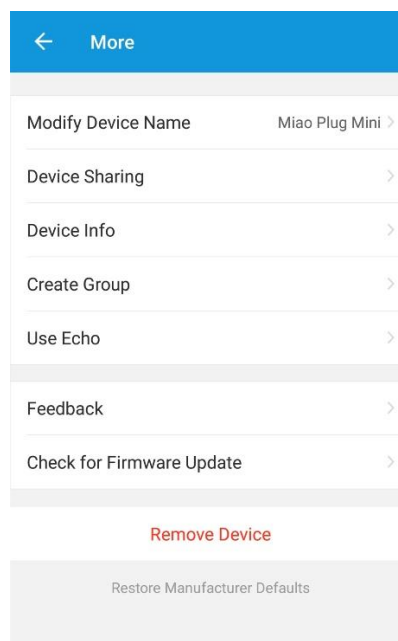
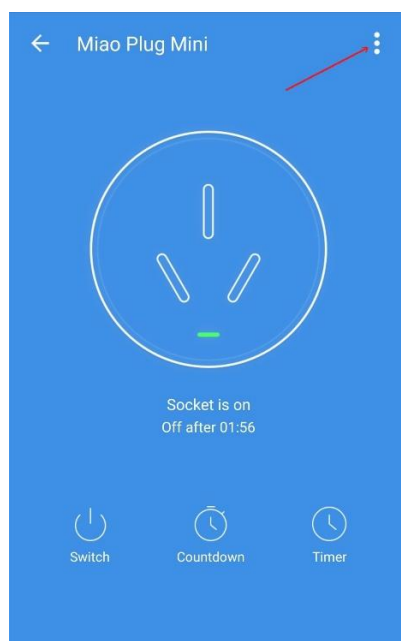
1. Long press the button on the socket until the yellow light flashes rapidly.



Press and hold (for 10 seconds)  
until the LED flashes yellow rapidly to  
reset the Smart Plug Mini.

2. Reset smart plug settings in the MiaoHome app.

- Click the (Settings) on the top right corner.
- Click “Remove Device” to reset

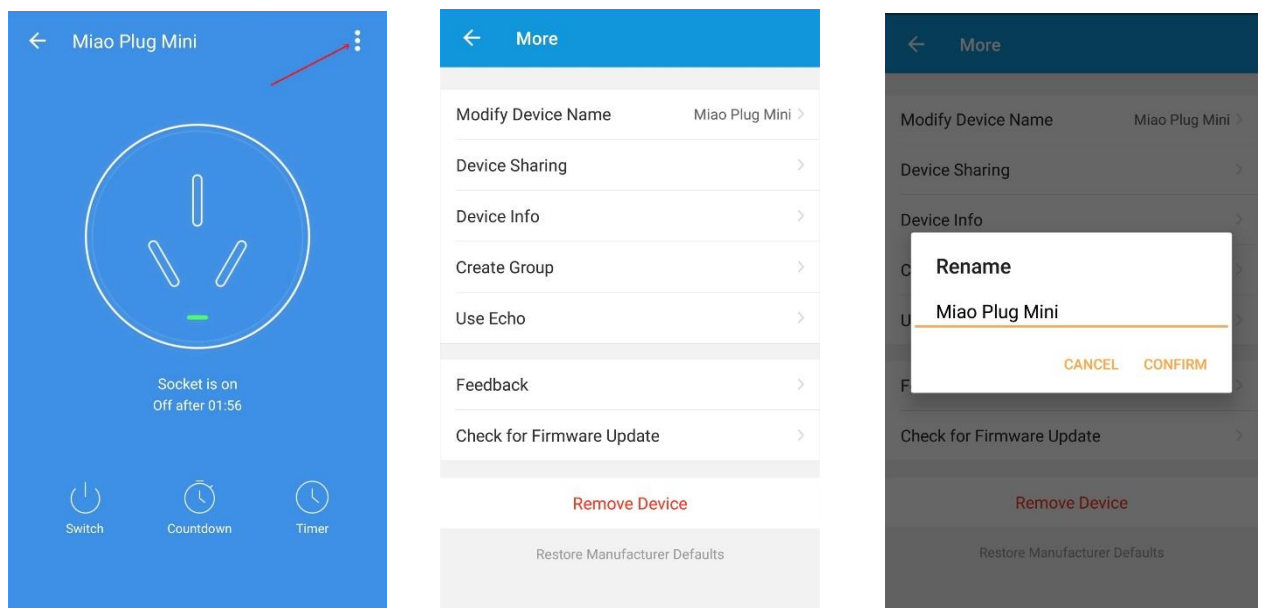


## MiaoHome Setting

MiaoHome allows you to set according to your habits.

### Customize smart plug name

You can name your Smart Wi-Fi Plug Mini with a descriptive name that represents the household appliances connected through smart plugs. You can set it in MiaoHome's APP screen.



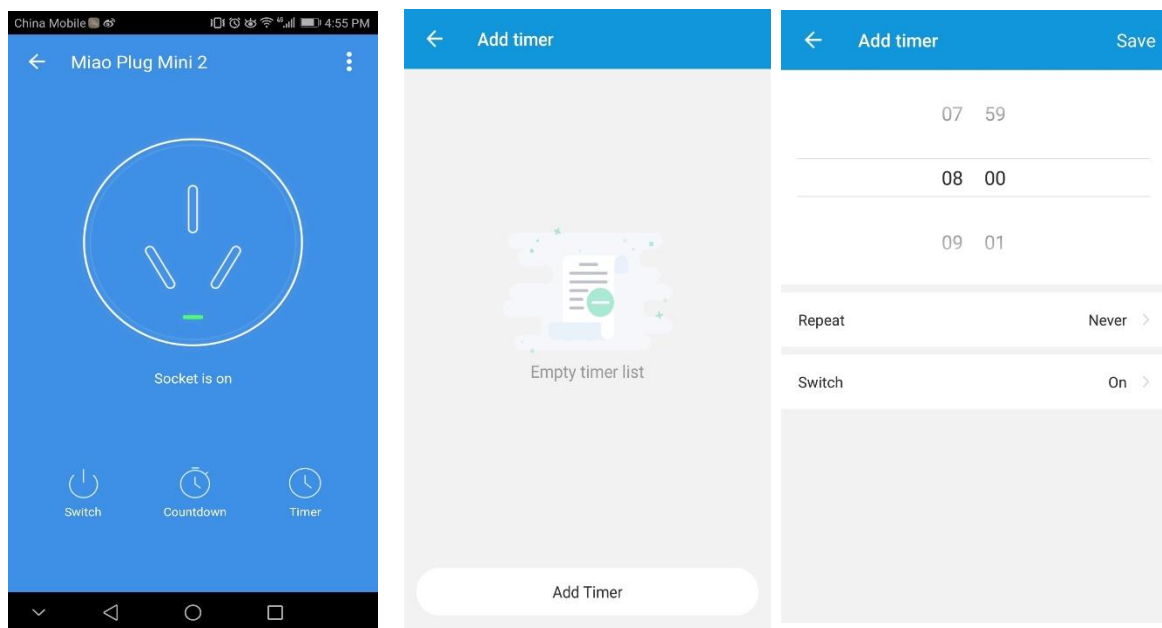
1. Clicking “Miao

Smart Plug” on the APP screen go to setting.

2. Click the (Settings) on the top right corner.
3. Click “Modify Device Name” to modify the device name.
4. Write the new device name, then confirm.


## Timer

You can use the timer function to control the smart plug on and off. When the countdown is over, the smart socket will turn on or turn off automatically.



1. Clicking “Miao

Smart Plug” on the APP screen go to setting

2. Click the  (Timing setting) to open the timer screen.
3. Click “ADD Timer” to set timer.
4. Set timer and Click “Repeat” to choose the date to repeat, then select the “on” or “off” of the switch
5. Click “Save” in the top right corner to save

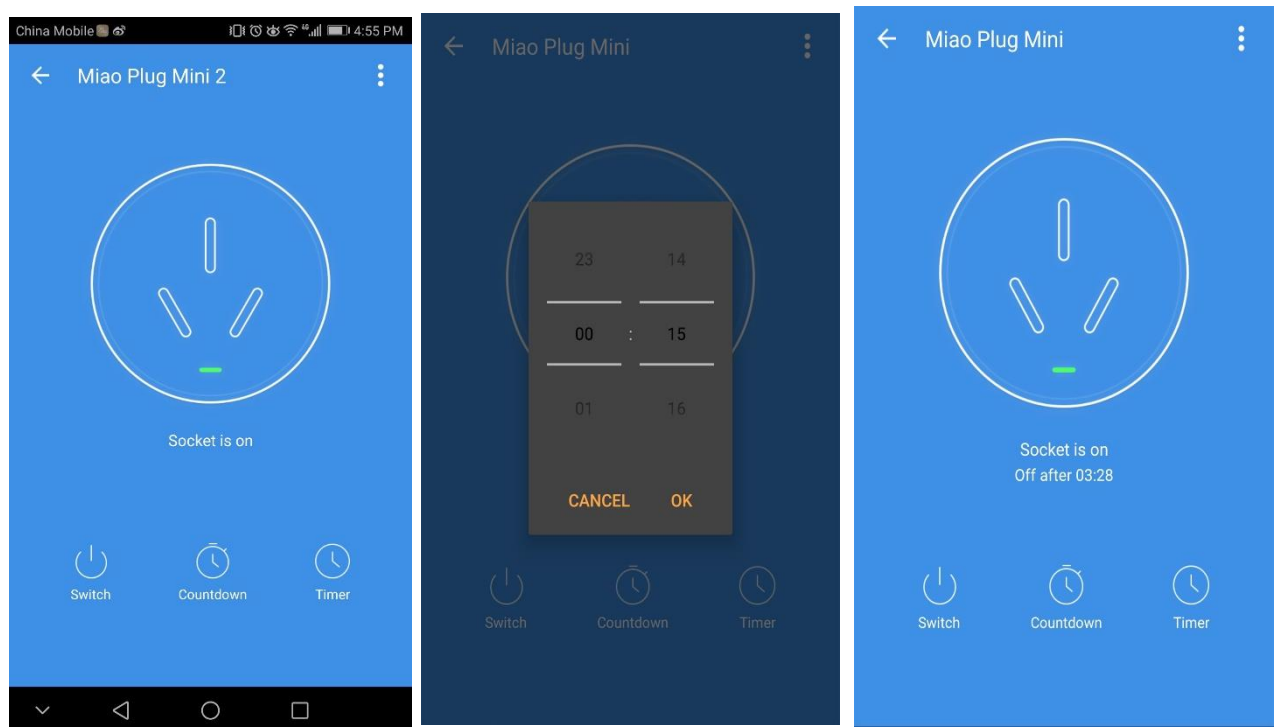
You can create as many events as you like and edit them at anytime from the Schedule




screen.

## Countdown

You can set the smart plug's schedule based on your lifestyle and schedule to turn on or turn off. For example, you can set a schedule for Miao smart plug (Connected with air conditioning) to turn on. Then you can enjoy cool home once you get home.



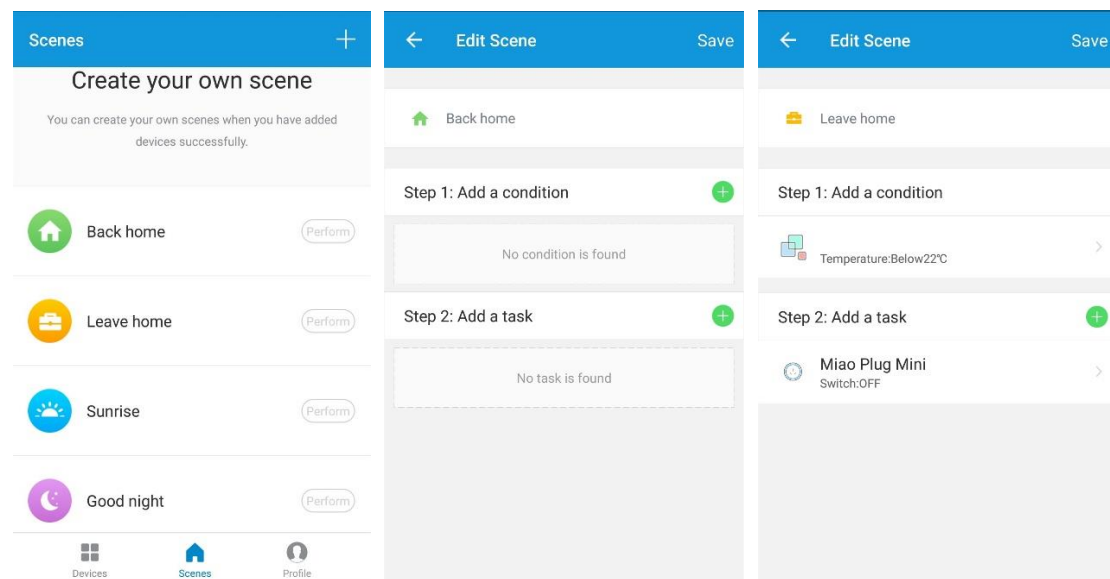
1. Clicking “Miao Smart Plug” on the APP screen go to setting
2. Click the  (countdown) to open the countdown screen.


3. Choose the countdown time, then click “OK”.

NOTE: If a timer overlaps an existing scheduled Event, that schedule will not run. However, timer will be canceled when power is lost or interrupted, or at any time you turn on/off the smart plug manually using MiaoHome or the physical ON/OFF switch. You may need to set a new timer if desired.

## Scene Settings

A group of socket devices default to a set of smart scenarios. You can create your own personalized scenes. For example, when you get back home, you can set the light to turn on and the air condition to start work.



1. On the main Home screen, click the  (Scenes) Tab to enter scene setting interface.
2. Choose one of the preset scenes to set up your own smart scene.
3. Add a condition, add a task.
4. Click “Save” in the top right corner to save

Note: You need one Miao smart plug at least to create the smart scene.

## Frequently Asked Questions

1. Which devices can be controlled by MiaoHome Smart Wi-Fi Plug Mini?

You can control a lot of small household appliances by MiaoHome Smart Wi-Fi Plug Mini, Such as hot-water heater, fans, light, air condition humidifiers and so on.

2. What should I do when I can't Using MiaoHome with Smart Wi-Fi Plug Mini?
3. Make sure the smart plug and MiaoHome APP are paired successfully
4. Make sure smart plug and phones are connected to the network
3. What should I do when MiaoHome smart Wi-Fi Plug Mini fails to connect to the Wi-Fi?
  - Ensure the power on and turn on
  - Check whether Wi-Fi network is available
  - Ensure that the router password is correct
  - Ensure the net of routers and mobile phone is unblocked
  - Reset MiaoHome smart Wi-Fi plug (indicator blink yellow light)
  - Follow the connection steps to connect again
4. How to connect Smart Plug Mini to Amazon Echo?

Refer to the manual: 《Quick Guide of connecting neutral app to Amazon Echo》

## Usage Tips

- Place your Smart Wi-Fi Plug Mini within the range of your Wi-Fi router or access point(approximately 100 feet).
- Avoid physical obstructions and radio interference in the surrounding area.

## Support

If you encounter any issues with MiaoHome Smart Wi-Fi Plug Mini or configuration, please visit [www.mokosmart.com](http://www.mokosmart.com) for web support and troubleshooting information.

## Specifications

### NETWORK

Protocol	IEEE 802.11b/g/n
Wireless Type	2.4GHz, 1T1R
System Requirements	Android 4.1 or higher, iOS 8 or higher

### GENERAL

Certification	RoHS, FCC, UL
Environment	<ul style="list-style-type: none"><li>• Operating Temperature: 0 °C~ 40 °C ( 32°F ~ 104°F )</li><li>• Operating Humidity: 10%~90%, Non-condensing</li></ul>
Degree of protection	IP20
Dimensions( H X W X D	66*40*40mm
Material	PC
Buttons	Power and Setting button
Supported Load Types:	Coffee Maker: 800 W Desk LED Lamp: 235.2 W LCD: 270 W Heater: 1500 W Humidifier: 260 W Iron: 1500 W Toaster: 850 W Tower Fan: 50 W

### WORKING STATUS

Input voltage	120VAC
Output voltage	120VAC
Maximum Load	15A

## Limited Warranty

MOKO Technology Ltd provides a limited warranty on all eligible MOKO Technology Ltd products purchased in the United States. The limited warranty covers failures due to defects in material or workmanship on devices, antennas and accessories\*. Packaging, software products and technical data are not covered under the limited warranty. The limited warranty is only applicable to the original purchaser of the product. Proof of purchase and a complete product serial number are required to receive any services guaranteed as part of the limited warranty. The maximum liability of MOKO Technology Ltd is equal to, and no higher than the product's purchase price.

MOKO Technology Ltd does not provide refunds under the limited warranty in any conditions. MOKO will replace defective units with factory refurbished products. If a factory refurbished unit is not available, then the defective unit will be replaced with a brand new product. If the defective unit is discontinued, MOKO will replace it with product(s) of equivalent value and features. Product warranty periods do not renew with replacement units. The original purchase date and warranty period will apply to replacement products.

## **Warranty periods**

MiaoHome Smart Wi-Fi Plug Mini's warranty period is 12 months.