

H1 Keychain Beacon

Product Brief



Designed with shape of compact case, and integrated with IP65 waterproof structure, external button and 3-axis accelerometer sensor, H1 Keychain Beacon is the best choice to apply for the scenario of personnel tracking, motion detection and SOS trigger situations.

Personnel tracking ensures the safety of patients and employees

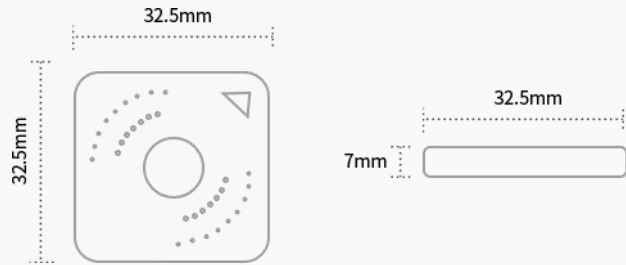
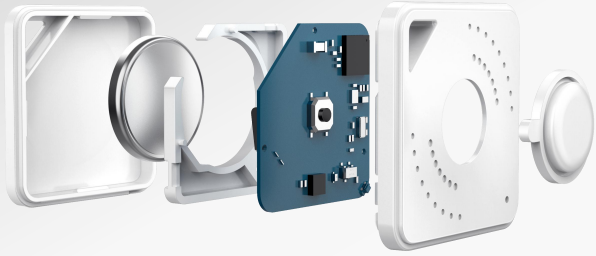
- Long and stable advertising signal make it easy to track and locate your patients, employees and students.
- Emergency button to notify emergency situations, task completion, or other predefined events in time.

Marketing Promotion

- ✓ Multiple advertising protocol provided and customized format supported.
- ✓ Portable design with IP65 waterproof.
- ✓ Convenient carrier for personnel tracking.
- ✓ 3-axis sensor available for motion detection.
- ✓ External push button for SOS shortcut trigger.

All-round service and customization to save your time and costs to market quickly

- Certified for USA (FCC), Europe (CE) including REACH and RoHS environmental regulation.
- All other worldwide certifications can be customized.
- Branding, Logo, Label, Packaging, Manufacture parameters, even hardware and firmware are all customizable.



General Features

Main Chip	Nordic nRF52810
Bluetooth	Bluetooth 4.2 (hardware compatible with bluetooth 5)
Range	Up to 80 meters (in the open area and no obstacles)
Dimension	5mm x 32.5mm x 7.0mm
Weight	7.8g (with battery)
Material	ABS+PC & TPU
Waterproof	IP65
Color	White
Installation	Keychain, Hang, Neck chain, Sticker
Button	Mechanical button
LED	Single red LED
Sensor	3-axis accelerometer sensor (optional)
Operating temperature	-20°C / + 60°C
Storage temperature	-20°C / + 70°C (without battery) 10°C / + 25°C (with battery)
Humidity	0% ~ 95% (non-condensing)

Functions

Advertising format	Apple iBeacon Google Eddystone (UID, URL, TLM) MOKO BeaconX Pro sensor data
Multi-advertising	Support up to 6 active slots (Beacon can broadcasts different advertising packets separately)
Configurable list	Advertising format and data/ Beacon name Tx Power/ Advertising interval Connection password/ Trigger options/ Sensor parameters
Sensor sampling	Broadcast or notify the 3-axis G-sensor data in real time (with 3-axis G-sensor)
SOS emergency (Button trigger)	Two or three times to click the button to change the advertising status and data for emergency help
Motion detection	3-axis G-sensor identify whether the Beacon is moving to change the advertising status and data
Configuration APP	iOS and Android are available Scanning the advertising data and connecting to configure all parameters Available APP SDK for customer to develop
Firmware update	Nordic DFU OTA/ J-link

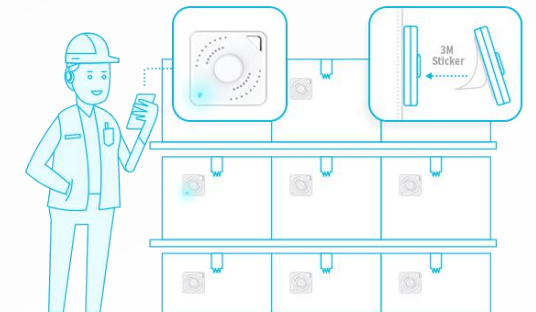
Power

Power supply	Replaceable CR2032 Lithium Coin Cell Battery 220mAh
Average current	15.6uA (Default settings*)
Lifetime	13 months (Default settings*)

Default settings - 1 active slot, 1000ms ADV interval, 0 dBm Tx power and without 3-axis sensor.

Service and Customization

Certification	USA (FCC), Europe (CE-RED, CE-LVD, CE-EMC, REACH, RoHS) Other certifications can be customized
Manufacture customization	MP Pre-configuration parameters Packaging/ Laser logo/ Label/ Sensor
Development	Custom firmware development Customer firmware programing Custom hardware design and layout



Contact Us

MOKO TECHNOLOGY LTD.

Add: 4F, Building2, Guanghui Technology Park,
MinQing Rd, Longhua, Shenzhen, Guangdong, China

Tel: 86-75523573370

Fax: 86-75523573370-808

E-mail: Support_BLE@mokotechnology.com

Website: www.mokoblue.com

www.mokosmart.com



MOKO SMART