

M2 Beacon

Product Brief



M2 Beacon is mainly used for Assets Tracking, Indoor Navigation, Wayfinding, Proximity Marketing, etc. With its multi installation methods and robust enclosure, it can be deployed in factory, warehouse, building and other indoor or outdoor places.



High performance Beacon for assets tracking

- Long and stable advertising signal make it easy to trace your assets
- Ruggedized design with IP67 waterproof can be used in the harshest indoor and outdoor environments
- Various installation methods make it possible to deploy anywhere

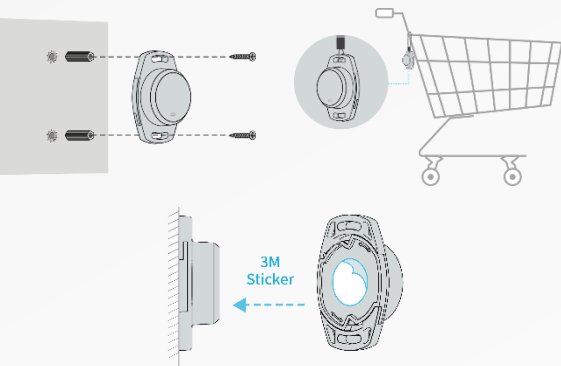
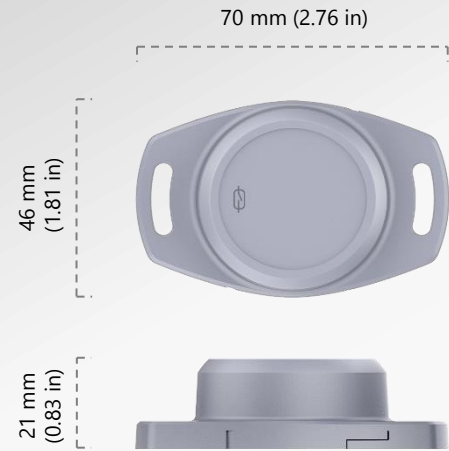
Smart hardware and software enables M2 to join your solution easily

- Support Apple iBeacon, Google Eddystone(UID, URL, TLM) and Moko BeaconX Pro Beacon protocols
- Hardware is compatible with Bluetooth 5.1
- Integrated 3-axis accelerometer and magnetic (Hall-effect sensor) switch sensors
- Accelerometer sensor for motion detection can identify whether the Beacon is moving
- Large-capacity and replaceable CR2477 battery ensures up to 4 years lifetime
- Smartphone app (iOS & Android, and provide SDK) easily configures all parameters

All-round service to save your time and costs to market quickly

- Certified for USA (FCC), Europe (CE) including REACH and RoHS environmental regulation
- All other worldwide certifications can be customized
- Branding, Logo, Label, Packaging, Manufacture parameters, even hardware and firmware are all customizable





General Features	
Main Chip	Nordic nRF52811
Bluetooth	Bluetooth 4.2 (hardware compatible with Bluetooth 5.1)
Range	Up to 160 meters (in the open area and no obstacles)
Dimension	70mm x 46mm x 21mm
Weight	33.5g (With battery)
Material	ABS+PC
Waterproof	IP67
Color	Grey
Installation	Hang, Sticker, Screw
Button	Inner mechanical button
LED	Single red LED
Sensor	Omni polar Hall-effect sensor for magnetic switch 3-axis accelerometer sensor (optional)
Operating temperature	General -20°C / + 60°C -40°C / + 85°C can be customized
Storage temperature	-20°C / + 70°C (without battery) 10°C / + 25°C (with battery)
Humidity	0% ~ 95% (non-condensing)

Functions	
Advertising format	Apple iBeacon Google Eddystone (UID, URL, TLM) MOKO BeaconX Pro sensor data (with 3-axis G-sensor)
Multi-advertising	Support up to 6 active slots (Beacon can broadcasts different advertising packets separately)
Power on/off	Press inner mechanical button Magnet approaching to pull-down hall effect sensor
Configuration	Advertising format and data/ Beacon name Tx Power/ Advertising interval Connection password/ Trigger options/ Sensor parameters
Sensor sampling	Broadcast or notify the 3-axis G-sensor data in real time (with 3-axis G-sensor)
Motion detection	3-axis G-sensor identify whether the Beacon is moving to change the advertising status and data
Power saving mode	Motion detection stops Beacon broadcasting and make Beacon to sleep
Firmware update	Nordic DFU OTA/ J-link
Configuration APP	iOS and Android are available Scanning the advertising data and connecting to configure all parameters Open APP SDK for customer to develop

Power	
Power supply	Replaceable 1000mAh lithium coin CR2477 battery
Average current	21uA (Default settings*, without 3-axis G-sensor) 28uA (Default settings*, with 3-axis G-sensor and motion detection is always active)
Lifetime	4 years (Default settings*, without 3-axis G-sensor) 3 years (Default settings*, with 3-axis G-sensor and motion detection is always active)

Service and Customization	
Certification	USA (FCC), Europe (CE-RED, CE-LVD, CE-EMC, REACH, RoHS) Other certifications or approvals can be customized
Manufacture customization	MP Pre-configuration parameters Packaging/ Laser logo/ Label
Development	Custom firmware development Customer firmware programing Custom hardware design and layout



Default settings - 1 active slot, 1000ms ADV interval and 0 dBm Tx power

Contact Us

MOKO TECHNOLOGY LTD.

Add: 4F, Building2, Guanghui Technology Park, MinQing Rd,
Longhua, Shenzhen, Guangdong, China

Tel: 86-75523573370

Fax: 86-75523573370-808

E-mail: Support_BLE@mokotechnology.com

Website: www.mokoblue.com

www.mokosmart.com



MOKO SMART