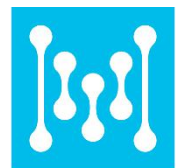




PIR PRESENCE

The wireless Bluetooth® PIR PRESENCE is the ideal product for people presence detection and desk occupancy monitoring. With passive infrared sensor and hall sensor, PIR PRESENCE can be utilized in smart lighting control, facility management and occupancy detection in various places such as offices, hospitals, warehouse or intrusion alarm at home.

Thanks to the outstanding low consumption of Bluetooth LE and large capacity of battery, PIR PRESENCE can be working continuously up to 7 years without replace battery.



MOKO SMART

What are the benefits of PRESENCE?

Wall-to-Wall coverage

Unique lens design provides 120° horizontal and 60° vertical detection angle.

Selectable sensitivity

Three gears to adjust sensitivity for minimising detection range to adapt for small office.

Flexible mountings

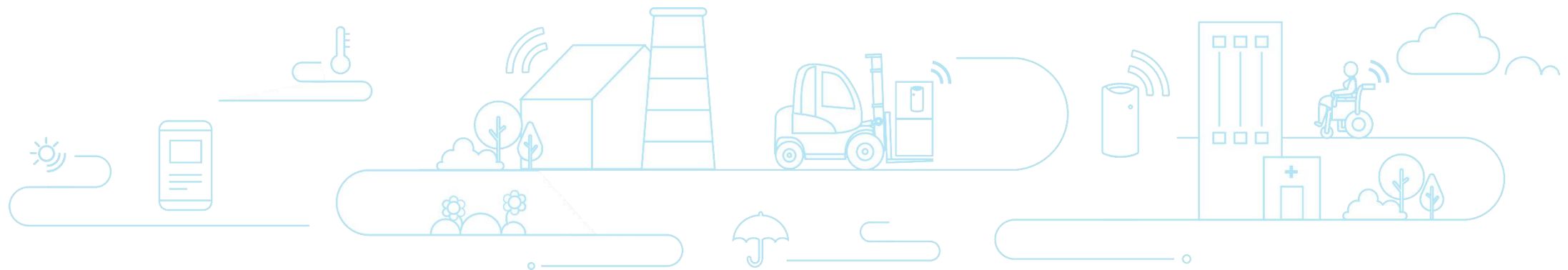
Extremely easy to install in just a few minutes, with double sided tape or smart bracket.

Extreme battery life

Up to 7 years lifecycle* with 5200mAh large capacity battery to guarantee continuity.

Wide temperature range

Rugged design with PC housing material to extend wider temperature range in -20°C ~ 60°C.



*Lifecycle: Tested in Default settings - 1 active slot, 1000ms ADV interval , -12dBm Tx power .

What are the applications of PRESENCE?



Smart lighting

Combine with smart lighting IOT devices and deployed in offices, conference room or warehouse, PIR PRESENCE mounted to a ceiling or fixture will control the lighting between shelves -- so that lighting in unoccupied areas will turn off or turn to a lower level.



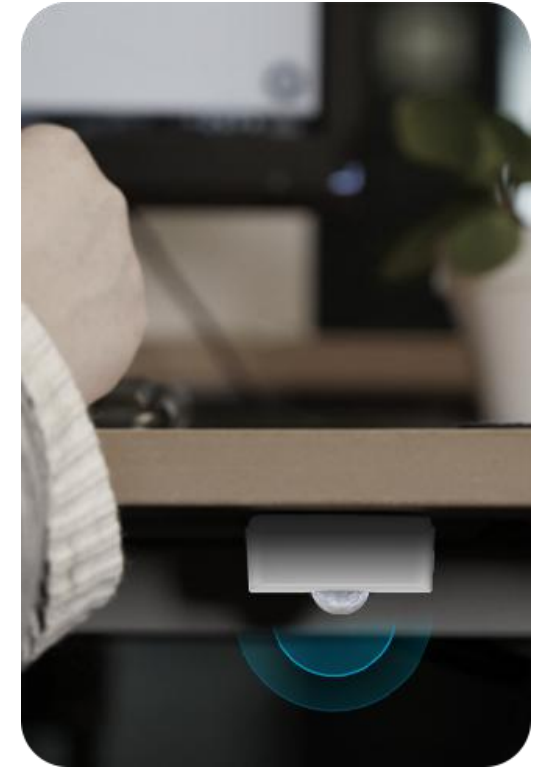
Intrusion alarm

Notify the owner of first signs of home intrusion by detecting the human movements, with its high sensitivity passive infrared sensor. As well to acted as a doorkeeper to monitor door/window's states through its hall sensor.



Occupancy detection

By detecting the presence of people in real time, PIR PRESENCE allow organizations to understand which spaces get the most use, or know which desks or meeting rooms are available at any one time, thus making space usage more efficiently.



On-site Presence monitoring

Deploy PIR PRESENCE underside of a table to monitor on-site situations and calculate working efficiency. When worker leaves, no movement and then PIR PRESENCE reports value 0, and reports value 1 when worker is on-site.

Multiple Installation Styles



① Double-sided tape



② Bracket

Main Specifications

Dimensions

74.2mm x 32.8mm x 46.9mm

Built-in Sensor

Passive infrared sensor
Hall sensor

Advertising Range

Up to 140m
(Open area without obstacles)

LED

Red

Button

1* Mechanical button
1* Reset button

Chipset

Nordic nRF52 series

Battery

2*AA Li-SOCI2 Batteries in parallel
5200mAh* | Replaceable

Installation Styles

Screw | Sticker

Color

White

Operating Environment

Temperature: - 20°C / + 60°C
Humidity: 0% ~ 95% (non-condensing)



Battery life* : Up to 7 years typically with standard configurations.

Sensor Specifications

Passive infrared sensor

General Parameters

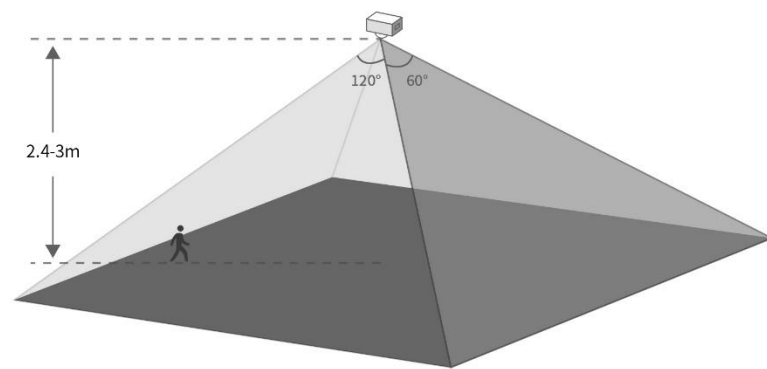
Viewing angle	Horizontal: 120°	Vertical: 60°
Motion detection distance	12m in Maximum	
Fresnel lens diameter	24mm	
Recommended installation height	2.4m - 3.0m	

Configurable parameters

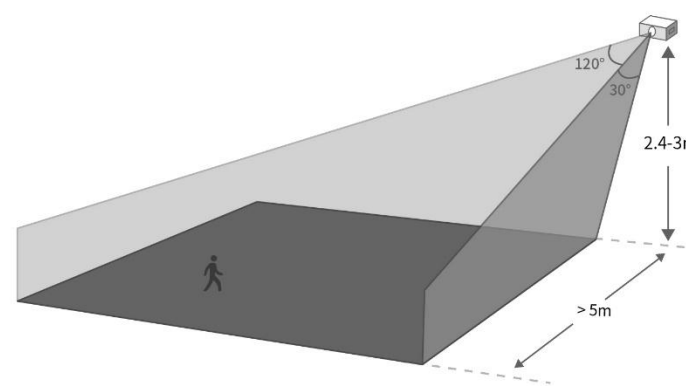
Sensitivity level	Low -- 5m	Middle -- 8m	High -- 12m
	(Can be customized in more level)		
Delay response level	Low -- 30s	Middle -- 10s	High -- 2s
	(Can be customized in more level)		

Hall sensor

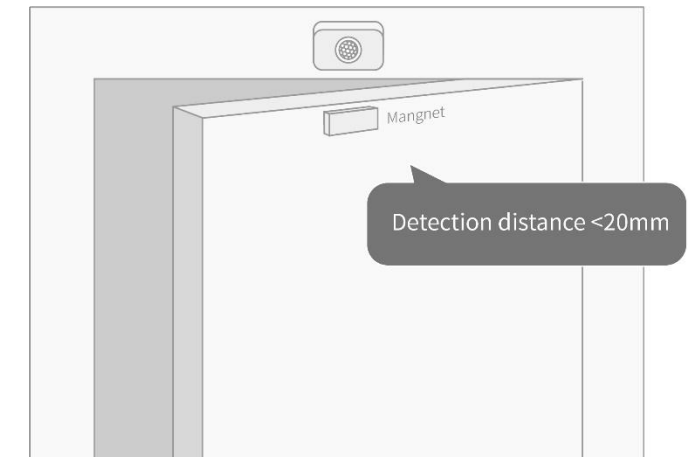
Detection distance	20mm
Recommended installation gap	<10mm



Ceiling installation type



Wall installation type



What customization services can we provide?



PCB re-layout design

Support customers in making hardware changes to accommodate mechanical design or functional requirements.



Firmware/APP customization

Assist customers in customizing the Firmware/APP to meet full compatibility of different end-users' requirements.



Logo/Packaging design

Offer customized packaging solution and logo design to meet customer's uniform requirements.



Product ID customization

We can set the Product ID according to customers' requirements to fit for different scenarios use.



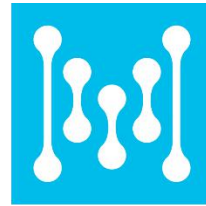
Firmware verification

Offer professional engineer team to test and verify the functionality of customer's developed Firmware.



Pre-configuration service

Support customers to pre-configure required parameters in Beacon during mass production.



MOKO SMART

MOKO TECHNOLOGY LTD.

Address: 4F, Buidling 2, Guanghui Technology Park, MinQing Rd, Longhua,
Shenzhen, Guangdong, China

E-mail: Support_BLE@mokotechnology.com

Website: www.mokosmart.com

www.mokoblue.com